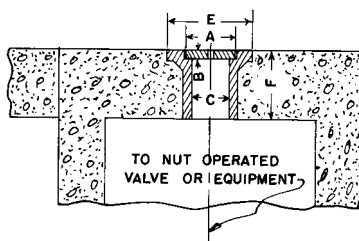


■ Note: When specifying/ordering grates, refer to "Choosing the Proper Inlet Grate" on pages 125-126.
For a complete listing of FREE OPEN AREAS and WEIR PERIMETERS of all NEENAH grates, refer to pages 327-332.

R-7506 Series Floor Box Frames and Lids



Floor boxes placed in slab provide access to extension stems which operate gate valves, plug valves or sluice gates at a lower level.

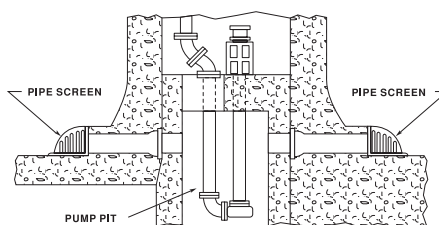
Furnished with removable lid that can be drilled and tapped for pipe extension (specify if required). Made in various lengths to fit slab thickness (specify F dimension).

Catalog No.	Dimensions in inches				
	A	B	C	E	F *
R-7506-A	5 1/2	3/8	4	7	18 max
R-7506-B	6	1/2	5	8	24 max
R-7506-C	7 1/2	1/2	6	9	20 max
R-7506-D	9 1/2	1/2	8	12	17 max
R-7506-E	11 1/2	1/2	10	13	16 max
R-7506-F	13 1/2	1/2	12	15	24 max

* Manufactured to dimension required. Specify slab thickness when ordering.

R-7512 Series Cast Iron Pipe Screen

For maximum free drainage area with openings sized to prevent clogging.
Six 3/4" holes for anchor bolts.



Typical Use in Subway Construction



Dimensions in inches					
Catalog No.	Height	Length	Openings	Width	for Pipe Size
R-7512-A1	13	18	1	16	10 inch
R-7512-B1	13	18	1	18	12 inch

Supplied By:

**TRENCHDRAIN
SUPPLY**

877-903-7246

www.trenchdrainsupply.com